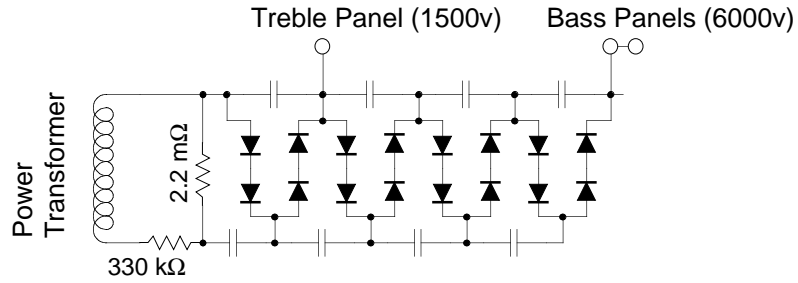


SDS Labs

Quad ESL power supply rectifier block design

September 8th, 1996



All Diodes: 1N4007

All Capacitors: 0.01 μ F 2 kV

Notes:

When bolting circuit board to power supply frame, use 1/4" stand-offs to insure that the traces are far enough away from the metal frame to prevent arcing.

Coating the circuit board with corona dope or conformal coating is recommended to prevent corona. In a pinch, a good coating of bee's wax will also work.

